

An anatomical model of a human torso, showing the muscles, bones, and internal organs. The model is positioned centrally, with the head at the top and the torso extending downwards. The muscles are rendered in a realistic red color, while the bones are white and the internal organs are in various shades of red and blue. The background is a light gray with faint, stylized line art of human figures.

# **BODIES REVEALED**

fascinating+real

**Reproducible Activity Sheets**

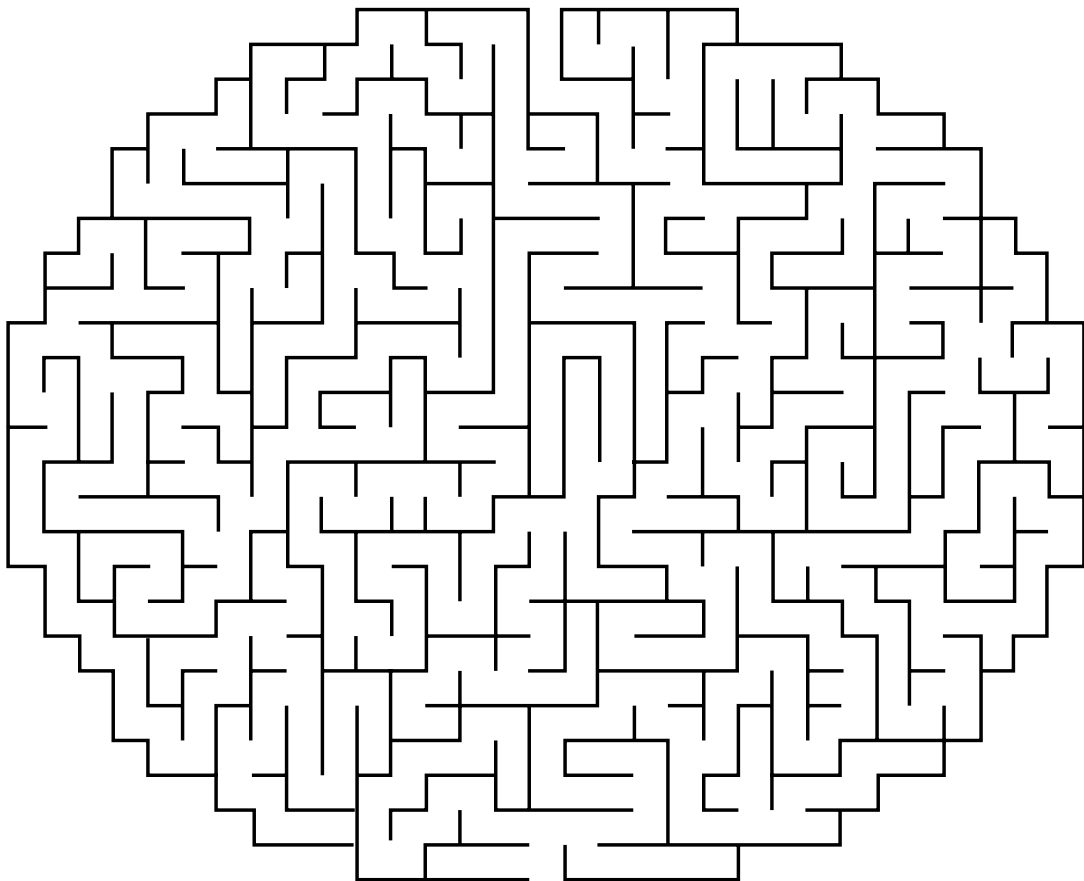
# **BODIES REVEALED**

fascinating+real

# **A-MAZE-ING BRAIN!**

Your brain operates by sending messages from cell to cell. A nerve cell releases a chemical called a neurotransmitter that crosses over a tiny space between the cells called a synapse to pass the message along to the next cell. Help this brain pass a message from one side of the maze to the other.

**Start**



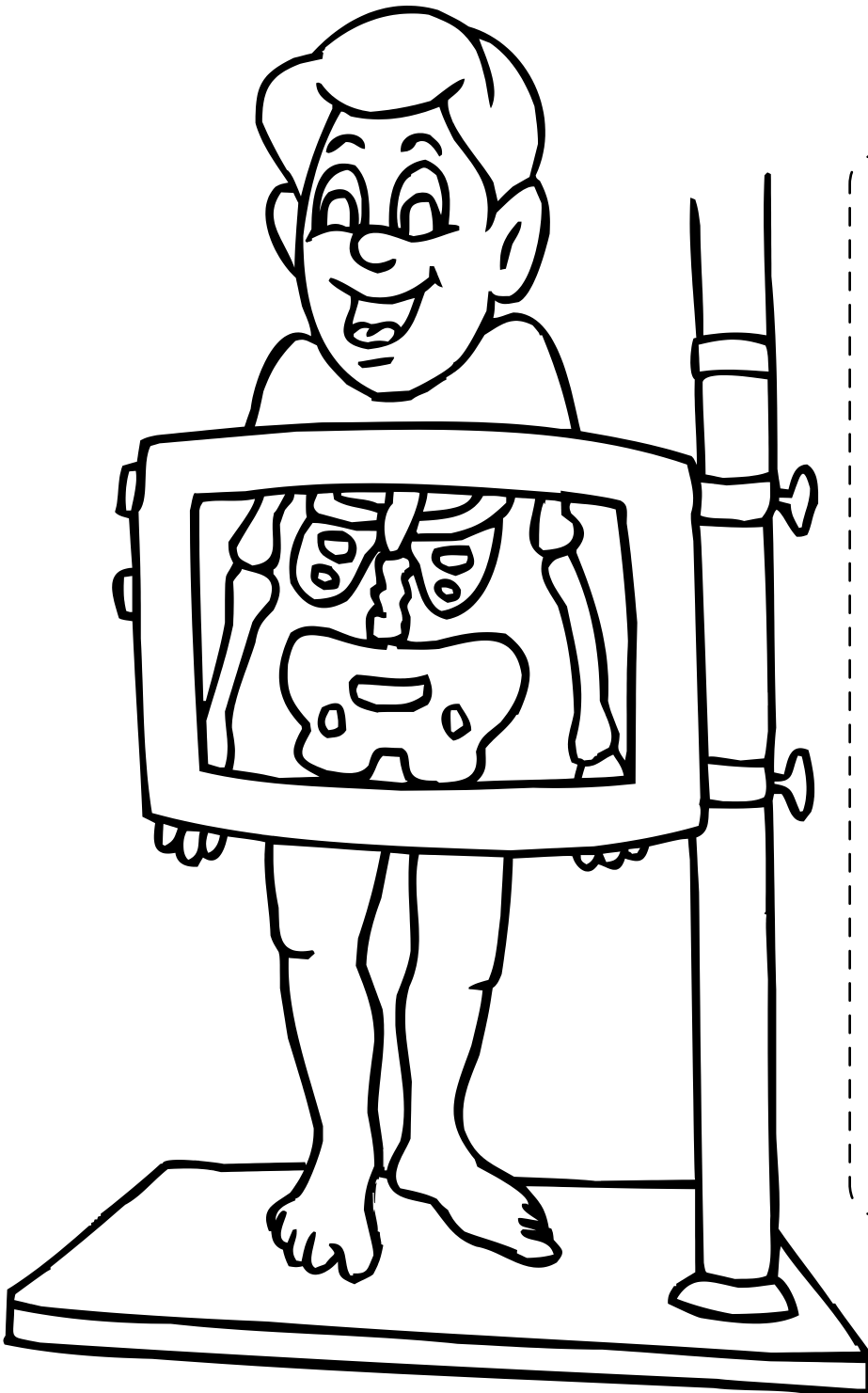
**Finish**



# BODIES REVEALED

fascinating+real

## COLOR ME!



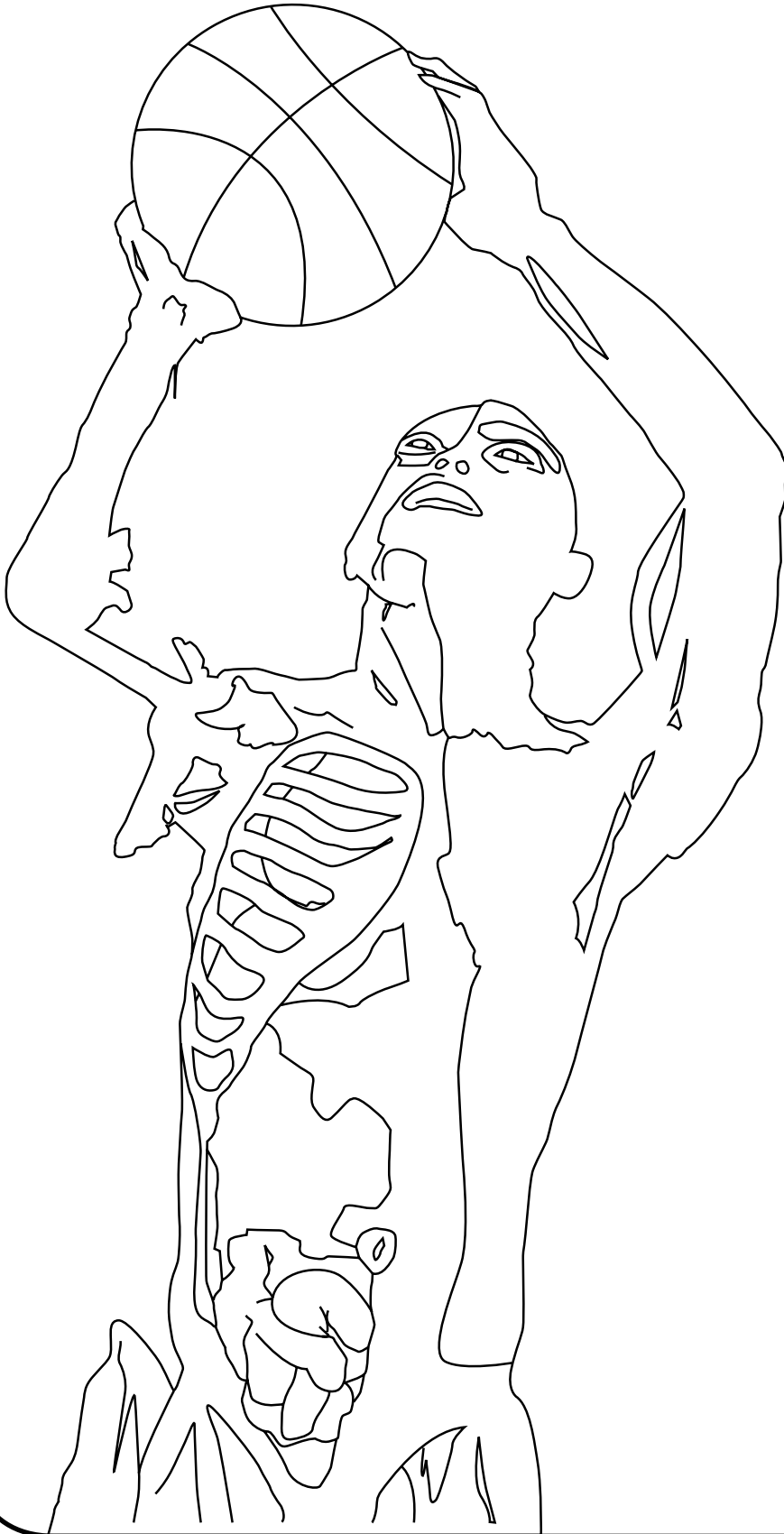
## DID YOU KNOW ?

- A human being loses an average of 40 to 100 strands of hair a day.
- A cough releases an explosive charge of air that moves at speeds up to 60 mph.
- Every time you lick a stamp, you consume 1/10 of a calorie.
- A sneeze can exceed the speed of 100 mph.
- Every person has a unique tongue print.
- An average human drinks about 16,000 gallons of water in a lifetime.
- A fingernail or toenail takes about 6 months to grow from base to tip.
- An average human scalp has 100,000 hairs.
- It takes 17 muscles to smile and 43 to frown.
- Babies are born with 300 bones, but by adulthood we have only 206 in our bodies.
- Fingernails grow faster than toenails.
- Humans shed about 600,000 particles of skin every hour—about 1.5 pounds a year.
- By 70 years of age, an average person will have lost 105 pounds of skin.

# BODIES REVEALED

fascinating+real

## COLOR ME!



## DID YOU KNOW ?

- A human being loses an average of 40 to 100 strands of hair a day.
- A cough releases an explosive charge of air that moves at speeds up to 60 mph.
- Every time you lick a stamp, you consume 1/10 of a calorie.
- A sneeze can exceed the speed of 100 mph.
- Every person has a unique tongue print.
- An average human drinks about 16,000 gallons of water in a lifetime.
- A fingernail or toenail takes about 6 months to grow from base to tip.
- An average human scalp has 100,000 hairs.
- It takes 17 muscles to smile and 43 to frown.
- Babies are born with 300 bones, but by adulthood we have only 206 in our bodies.
- Fingernails grow faster than toenails.
- Humans shed about 600,000 particles of skin every hour—about 1.5 pounds a year.
- By 70 years of age, an average person will have lost 105 pounds of skin.

# BODIES REVEALED

fascinating+real

# WORD SEARCH

Find the following words:

liver

artery

ligament

kidney

muscle

tendon

skeleton

spleen

organs

spine

appendix

nerves

brain

vein

intestine

lungs

bladder

pancreas

stomach

biceps

E N E N E R N A T P R E E A E E M S C C P O R T L  
N P I R P R R B K C E E A P P E N D I X R B L U E  
E D R N G E N I R N E U L A I E N R K G E A S V N  
N E I N V I D S T A S P S G I R N N A A L T J O S  
M G E B E N U A P N I L I O E I P N E N O G O E S  
O U I C E L P N R A E N S P S Y S S N M R P V N S  
N R S Y C T U N V P S A C B P G C P A V L E L P M  
A A A C L A R T E R Y B T I L O E C H E C B S E E  
T N P G L K S L G V T T P P L A H S M S E N E E L  
C E U N N E R L I S D L E R G E D D E B P X I H R  
E E N Y P G G T N P L N E E C N S D R E S L O A X  
E N N D I N S E V R E N E E T E L T E R L N E E Y  
P S V P O S E E N R N C Y O T R A I N R E I R E I  
R B L E I N I E S D X G P L O N L U N G S W N E N  
M N N E R D P P M T V G G R E S D E C R R S I S R  
O S C R N A I E E I N E R I P T X D E P S Q S Y L  
P V A E S N L N E T D I N E I S N I U E R N V R C  
N L X E E Y I N E N S A C E S E N E P L S L T I E  
R A S N R T X R I P N I D R N K G E M F S D N O E  
S T R C S C P N N C B C M E E E E R O A W L S D B  
T A C E D D N S O E B L E R S E O L D A G A T R N  
G A T D R N O A E S Y S S T E P K T E G P I P N T  
E N C I E P N I P T T E R C E V E Y K T D N L B O  
I E H B S V E I N S T L X I S S I E E L O T T T O  
E T V A R S N G P R B E E O T A N L O P A N A P L

# BOBIES REVEALED

fascinating+real

# WORD SEARCH

ANSWERS! ANSWERS! ANSWERS!

Find the following words:

- |          |          |          |           |          |
|----------|----------|----------|-----------|----------|
| liver    | muscle   | organs   | brain     | bladder  |
| artery   | tendon   | spine    | vein      | pancreas |
| ligament | skeleton | appendix | intestine | stomach  |
| kidney   | spleen   | nerves   | lungs     | biceps   |

Word search grid with highlighted words:

```

E N E N E R N A T P R E E A E E M S C C P O R T L
N P I R P R R B K C E E A P P E N D I X R B L U E
E D R N G E N I R N E U L A I E N R K G E A S V N
N E I N V I D S T A S P S G I R N N A A L T J O S
M G E B E N U A P N I L I O E I P N E N O G O E S
O U I C E L P N R A E N S P S Y S S N M R P V N S
N R S Y C T U N V P S A C B P G C P A V L E L P M
A A A C L A R T E R Y B T I L O E C H E C B S E E
T N P G L K S L G V T T P P L A H S M S E N E E L
C E U N N E R L I S D L E R G E D D E B P X I H R
E E N Y P G G T N P L N E E C N S D R E S L O A X
E N N D I N S E V R E N E E T E L T E R L N E E Y
P S V P O S E E N R N C Y O T R A I N R E I R E I
R B L E I N I E S D X G P L O N L U N G S W N E N
M N N E R D P P M T V G G R E S D E C R R S I S R
O S C R N A I E E I N E R I P T X D E P S Q S Y L
P V A E S N L N E T D I N E I S N I U E R N V R C
N L X E E Y I N E N S A C E S E N E P L S L T I E
R A S N R T X R I P N I D R N K G E M F S D N O E
S T R C S C P N N C B C M E E E E R O A W L S D B
T A C E D D N S O E B L E R S E O L D A G A T R N
G A T D R N O A E S Y S S T E P K T E G P I P N T
E N C I E P N I P T T E R C E V E Y K T D N L B O
I E H B S V E I N S T L X I S S I E E L O T T O
E T V A R S N G P R B E E O T A N L O P A N A P L
  
```

# BODIES REVEALED

fascinating+real

# BODY WORD MATCH

**DIRECTIONS:** The table below contains body parts in two pieces.  
Find the segments that fit together and write them in the answer area below.

ne	eg	kn	fa
fo	a	ye	ch
shou	rm	nd	e
ck	he	ba	ce
l	ee	uth	e
ot	mo	ha	est
ad	ck	ar	no
lder	se		

**ANSWERS:**

---

---

---

---

---

---

---

---

---

---

---

---

---

---

---

---

---

---



ANSWERS! ANSWERS! ANSWERS!

# BOB BODIES REVEALED

fascinating+real

# BODY WORD MATCH

**DIRECTIONS:** The table below contains body parts in two pieces. Find the segments that fit together and write them in the answer area below.

ne	eg	kn	fa
fo	a	ye	ch
shou	rm	nd	e
ck	he	ba	ce
l	ee	uth	e
ot	mo	ha	est
ad	ck	ar	no
lder	se		

**ANSWERS:**

- NECK

---

- FOOT

---

- SHOULDER

---

- BACK

---

- LEG

---

- HEAD

---

- ARM

---

- KNEE

---

- MOUTH

---

- NOSE

---

- EYE

---

- HAND

---

- EAR

---

- FACE

---

- CHEST

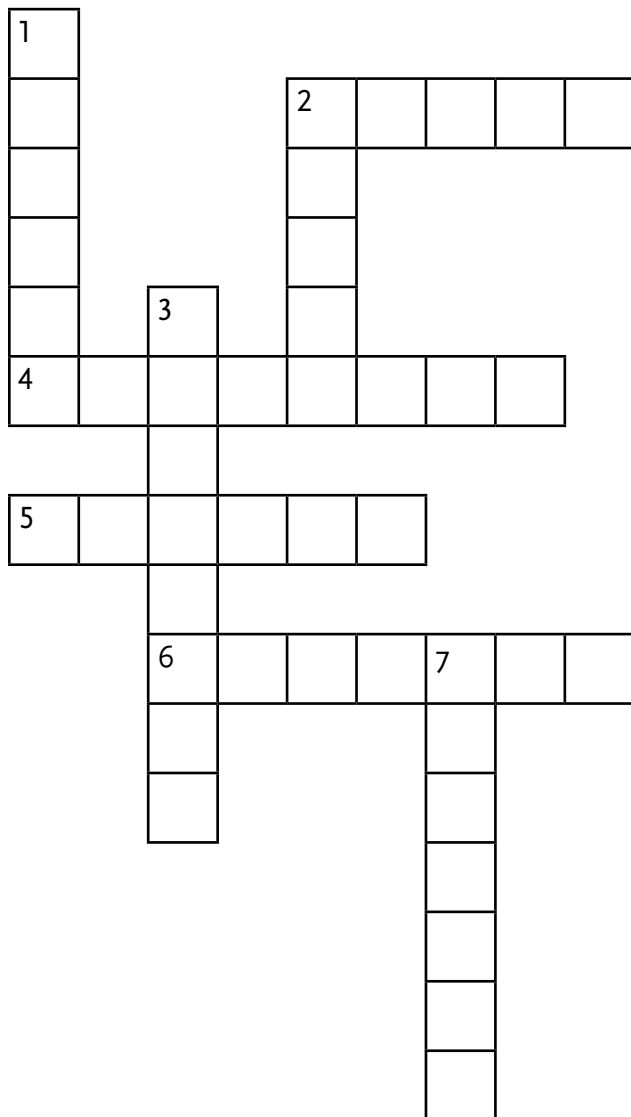
---

# BODIES REVEALED

fascinating+real

# CROSSWORD PUZZLE

Lower Level Puzzle



### Across

2. Bones protecting your brain
4. The frame inside you that holds up your body
5. Total number of your fingers and toes
6. Read more about your body at your \_\_\_\_\_.

### Down

1. Where your bones connect and bend
2. Protects your spinal column
3. BODIES \_\_\_\_\_
7. Study of what makes up your body and how it works

**Word Bank:** revealed, skeleton, joints, spine, library, twenty, anatomy, skull

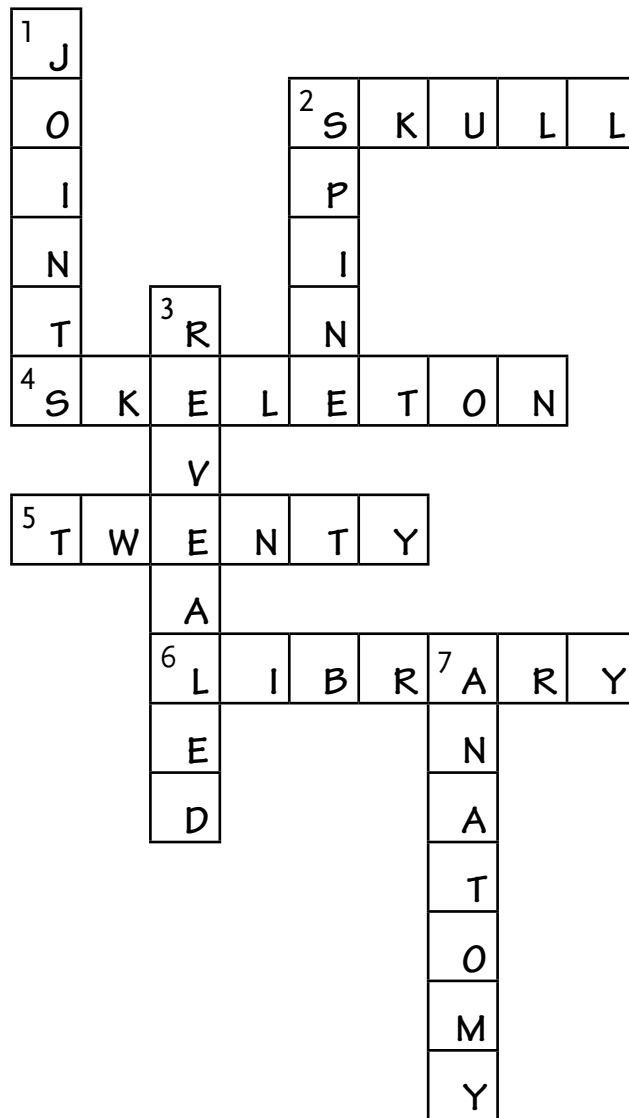
# BOBIES REVEALED

fascinating+real

# CROSSWORD PUZZLE

Lower Level Puzzle

ANSWERS! ANSWERS! ANSWERS!

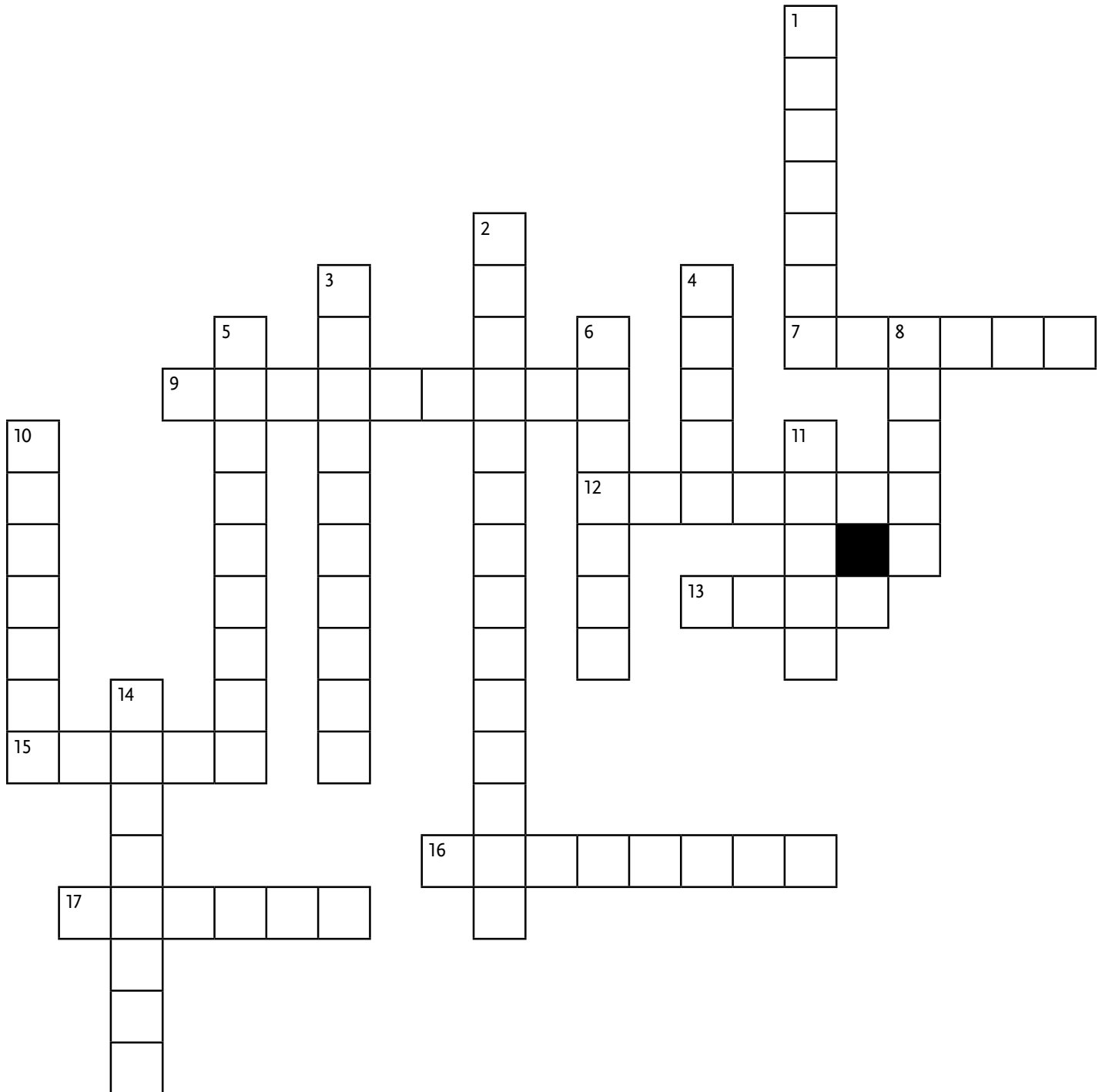


# BODIES REVEALED

fascinating+real

# CROSSWORD PUZZLE

Middle Level Puzzle



# **BODIES REVEALED**

fascinating+real

# **CROSSWORD PUZZLE**

Middle Level Puzzle

---

## **Across**

7. Found inside the bone and creates red blood cells
9. Diseased liver
12. Knee cap
13. Largest human cell
15. Smallest human cell
16. Beginning of small intestine
17. Voice box

## **Down**

1. Middle of the small intestine
2. Largest muscle in the body
3. Part of the brain that controls movement and balance
4. The ol' ticker
5. Helps your lungs pull in and push out air
6. Shoulder blade
8. Internal surface of the stomach
10. One of the three auditory ossicles
11. Last section of small intestine
14. BODIES \_\_\_\_\_

# BOBLES REVEALED

fascinating+real

# CROSSWORD PUZZLE

Middle Level Puzzle

ANSWERS! ANSWERS! ANSWERS!

1 J  
E  
J  
U  
N  
U

2 G  
L  
U

3 C  
E

4 H  
E  
A  
R

5 D

6 S  
I  
C

7 M A R R O W

8 R  
U

9 C I R R H O T I C

10 M  
A  
L  
L  
U  
E

11 I  
G  
L  
A  
E

12 P A T E L L A

13 O Y U M

14 R  
V  
E

15 S P E R M

16 D U D E N U M

17 L A R Y N X

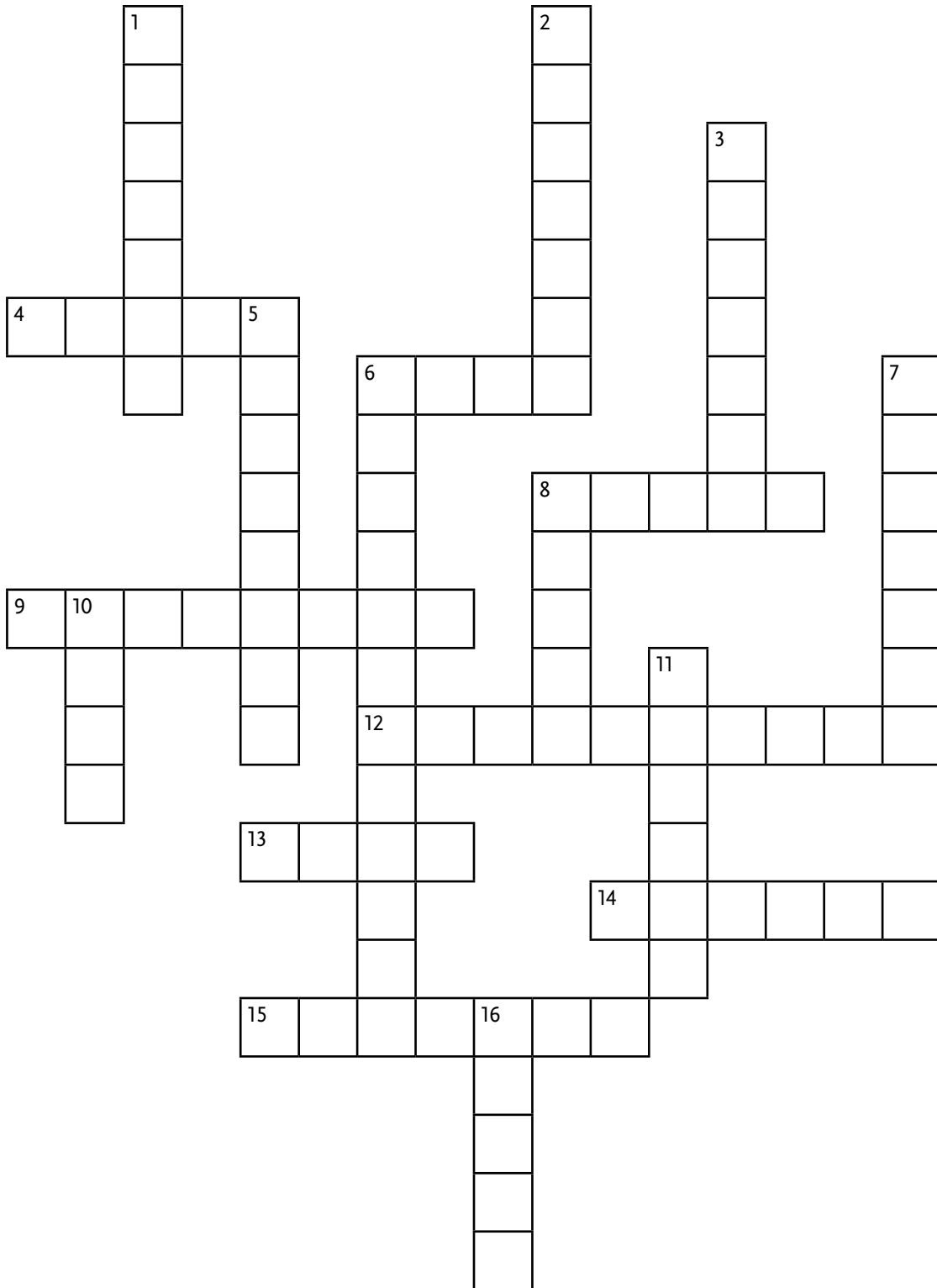
L  
E  
D

# BODIES REVEALED

fascinating+real

# CROSSWORD PUZZLE

Upper Level Puzzle



# **BODIES REVEALED**

fascinating+real

# **CROSSWORD PUZZLE**

Upper Level Puzzle

---

## **Across**

4. Longest bone in the human body
6. Your heart is about the same size as your \_\_\_\_\_.
8. The lungs of a smoker are this color.
9. The tendon joining the calf muscles to the heel bone
12. The branch of biology dealing with the function and activities of living organisms and their parts, including physical and chemical processes
13. By age 70, the average person will have lost 105 pounds of this.
14. Blood cells are created in \_\_\_\_\_.
15. It takes 17 of these to smile, 43 to frown.

## **Down**

1. The science of the structure of animals and plants
2. To cut apart to examine structure and relation of parts
3. Longest and thickest nerve in the human body
5. BODIES \_\_\_\_\_
6. A fetus acquires these at 3 months.
7. The science of life or all living matter in all its forms and phenomena, including origin, growth, reproduction, structure, and behavior
8. Babies are born with 300; adults have 206.
10. Every human spent about half an hour as a single \_\_\_\_\_.
11. The risk of having a heart attack is greater on this day of the week.
16. Largest human internal organ



# BOBLES REVEALED

fascinating+real

# CROSSWORD PUZZLE

Upper Level Puzzle

ANSWERS! ANSWERS! ANSWERS!

1 ANASTO

2 DISSECT

3 SCIMITAR

4 FEMUR

5 YEA

6 FIST

7 BIBOLOG

8 BLOCK

9 ACHEILLES

10 ELL

11 MEN

12 PHYSIOLOGY

13 SKINN

14 MARROW

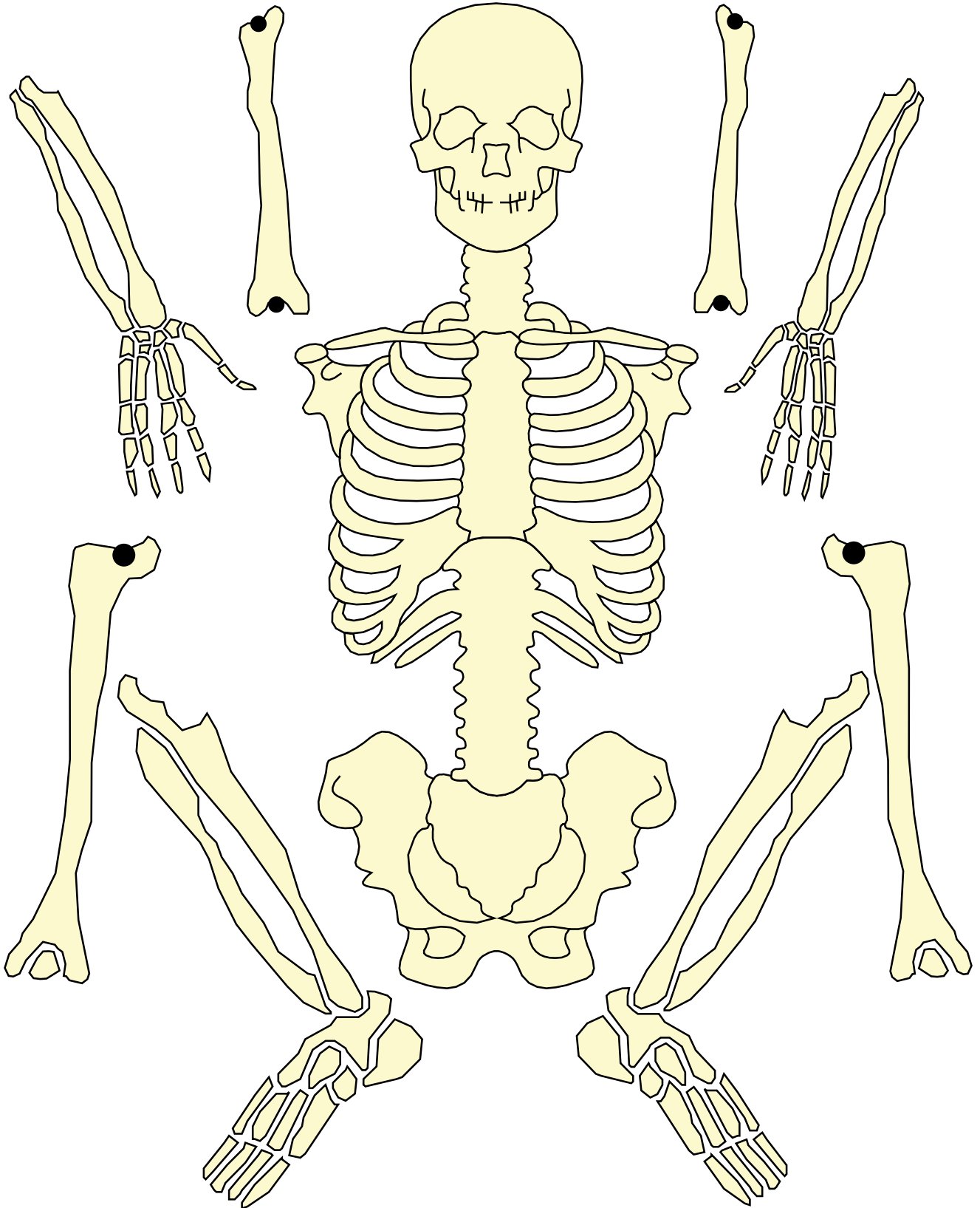
15 MUSCLES

16 IVER

# BODIES REVEALED

fascinating+real

# CUT OUT SKELETON



# **BODIES REVEALED**

fascinating+real

# **FACT** - OR - **FICTION**

## **How much do you know about yourself?**

Maybe not as much as you think! Take this True/False “quiz” to see if you can tell the difference between fascinating fact and fantastical fiction.

- |                               |                                |   |
|-------------------------------|--------------------------------|---|
| <input type="checkbox"/> True | <input type="checkbox"/> False | 1. Nerve cells create electrical impulses that reach speeds exceeding 270 miles per hour.   |
| <input type="checkbox"/> True | <input type="checkbox"/> False | 2. The smallest human cell is the female egg.   |
| <input type="checkbox"/> True | <input type="checkbox"/> False | 3. Girls’ brains count for 2% of their body weight. Boy’s brains account for 2.5%.  |
| <input type="checkbox"/> True | <input type="checkbox"/> False | 4. Bone is a matrix of hard minerals, built and maintained by bone cells. If you removed the minerals and kept the cells, you could tie your bones in a knot! |
| <input type="checkbox"/> True | <input type="checkbox"/> False | 5. The brain requires 100% of the body’s total blood supply.  |
| <input type="checkbox"/> True | <input type="checkbox"/> False | 6. On average, one pack of cigarettes shortens your life by 3 hours and 40 minutes.   |
| <input type="checkbox"/> True | <input type="checkbox"/> False | 7. The human brain is approximately 80% water.  |
| <input type="checkbox"/> True | <input type="checkbox"/> False | 8. Babies have 206 bones; adults have 300 bones.  |
| <input type="checkbox"/> True | <input type="checkbox"/> False | 9. Children’s bones grow faster in the springtime than any other time of the year.  |
| <input type="checkbox"/> True | <input type="checkbox"/> False | 10. More than 40% of breast and colon cancer in the United States develops in people who are underweight.   |

# BOBIES REVEALED

fascinating+real

ANSWERS! ANSWERS! ANSWERS!

## FACT -OR- FICTION

1. **TRUE**
2. **FALSE:** The male sperm is the smallest cell in the body. The female egg is the largest.
3. **FALSE:** Girls' brains account for 2.5% of their body weight; boys' brains account for 2%. Most brains weigh about 3.0 pounds, regardless of gender, but females generally weigh less than males.
4. **TRUE:** Bones contain calcium found in the form of calcium carbonate, which helps give bones their hardness. If you remove all of the minerals in bone using a weak acid, the calcium carbonate starts to react with the acid. Carbon dioxide gas is formed as the calcium carbonate breaks down and of course, a gas is not solid. Without it, the bones become much softer and are less rigid than before. Now you have a flexible, bendy bone!
5. **FALSE:** If your brain used up all 100% of your blood, there wouldn't be any left for the rest of you! But relative to other parts of the body, it does use a lot: the brain requires 20% (that's 1/5th) of the body's total blood supply.
6. **TRUE**
7. **TRUE**
8. **FALSE:** Babies have 300 bones when they are born. The bones fuse as we grow. Adults have 206 bones.
9. **TRUE:** The longer days of spring mean more sunlight. The body uses sunlight to produce Vitamin D, which is essential to processing calcium. Calcium is necessary for bone growth.
10. **FALSE:** More than 40% of breast and colon cancer in the United States develops in obese individuals.